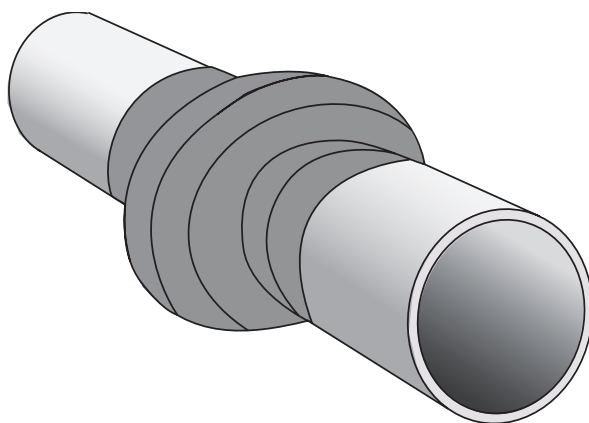


COVERING: PREMPASTETM, PREMIERTM MOULDING COMPOUND, PREMIERTM LD MASTIC, PREMTAPESTM, STEELCOATTM COLOURTAPE, PREMIERTM PVC SELF-ADHESIVE TAPE, PREMCOTETM TAPES

INSTRUCTIONS FOR USE

For the protection of fittings and similar structures from corrosion above ground, buried or immersed. To protect the metal structure from the environment the tapes must cover the entire surface.



SURFACE PREPARATION

Surfaces must be clean and dry. Remove all loose rust, scale and flaking coatings by scraping, wire brushing or blast cleaning.

PRIMING

For all diameter pipes and fittings apply PREMPASTETM by gloved hand or brush in a thin layer over the entire surface including threads, crevices and pitted areas.

Apply one coat of PREMPASTE over the entire area to be wrapped. Allow to dry.

STEELCOATTM COLOURTAPE does not require a primer.

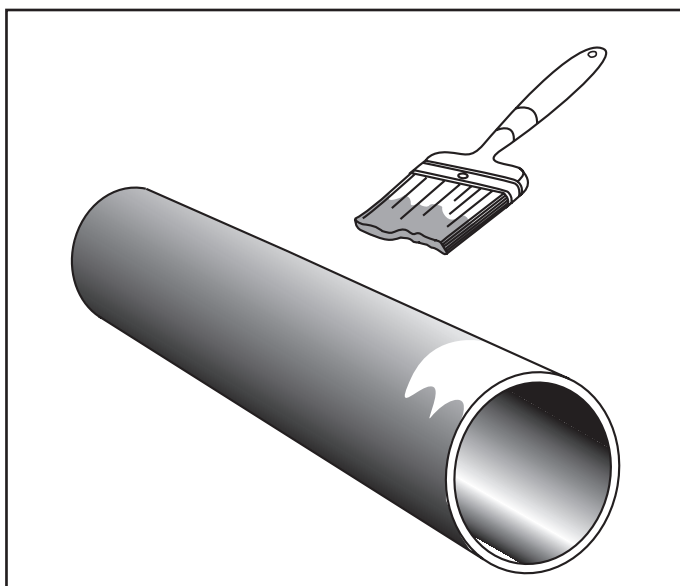


Fig 1. Priming pipes, rods and cables. Apply PREMPASTE to entire area to be wrapped with tape.

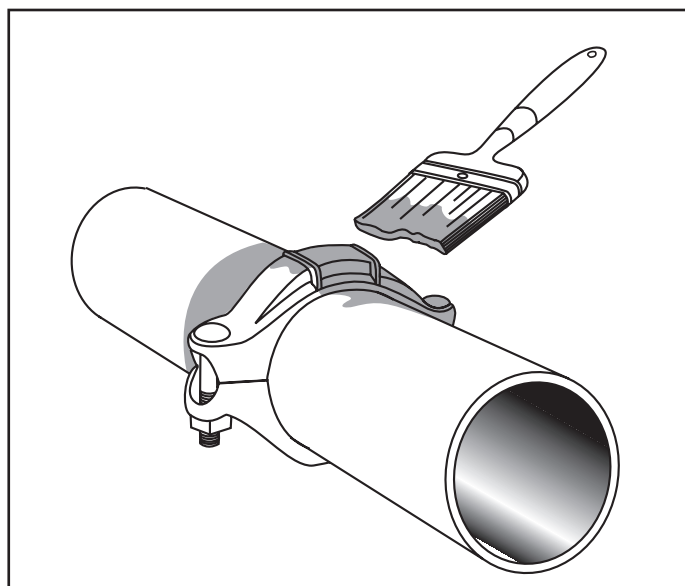


Fig 2. Priming flanges and couplings. Apply PREMPASTE to entire area to be wrapped with tape.

COVERING: PREMPASTE™, PREMIER™ MOULDING COMPOUND, PREMIER™ LD MASTIC, PREMTAPES™, STEELCOAT™ COLOURTAPE, PREMIER™ PVC SELF-ADHESIVE TAPE, PREMCOTE™ TAPES

TAPE APPLICATION FOR PIPES, RODS AND CABLES

Select as wide a width of tape as practical, e.g. 75mm wide for 75mm diameter pipe. For buried or immersed applications apply tapes with 55% overlap to give double thickness.

For above ground use overlap tapes by 15mm for widths up to 150mm and 25mm for wider tapes. Press the end of the tape firmly onto the pipe and unroll the tape around the pipe spirally, overlapping itself.

Apply sufficient tension to conform the tape to the surface without gaps. Do not overstretch. Start a new roll by overlapping the ends by one tape width.

Press down all folds and smooth the entire area with special attention to the overlaps.

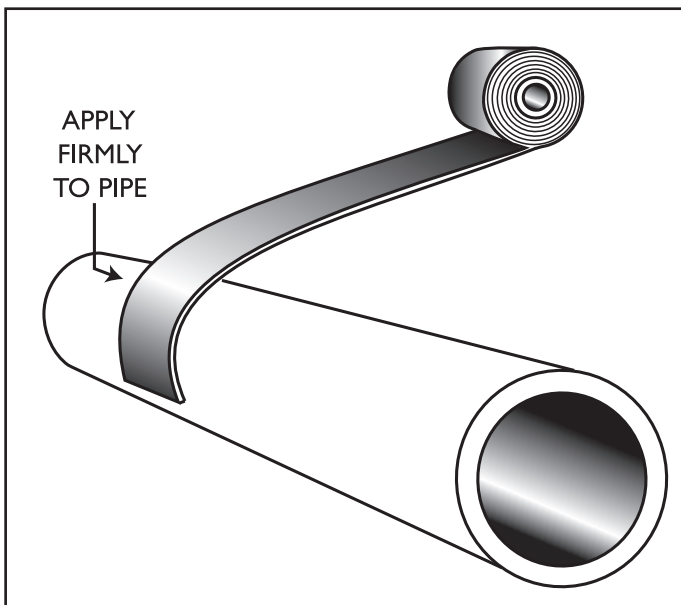


Fig 3. Starting the first roll of tape.

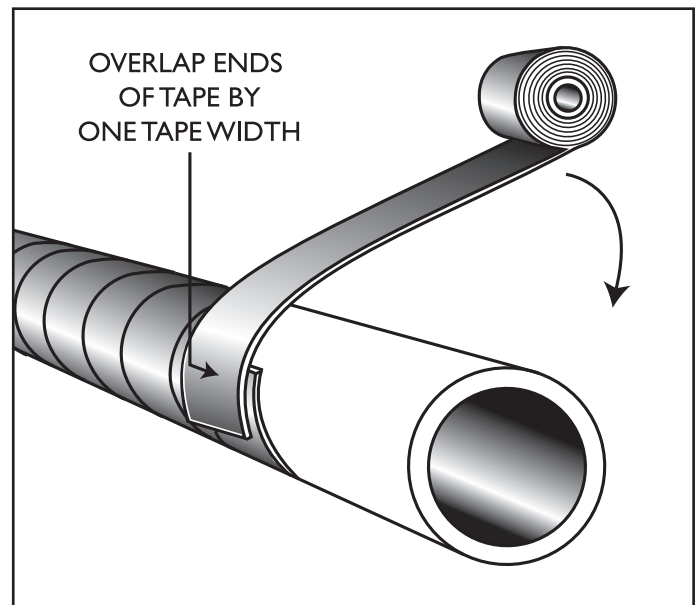


Fig 5. Starting a new roll of tape.

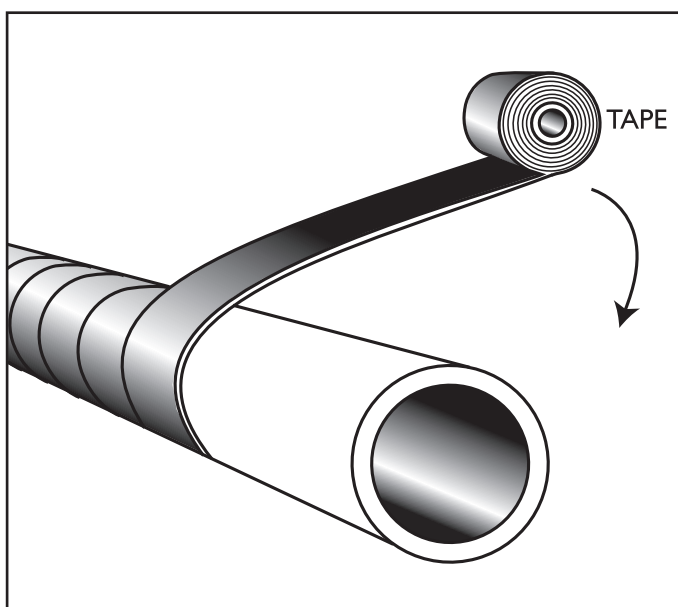


Fig 4. Diagram showing the correct application procedure for wrapping tape.

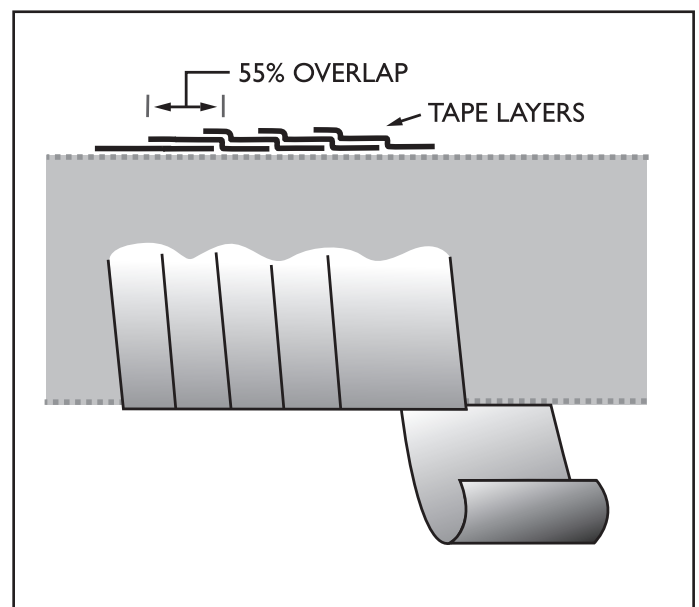


Fig 6. For buried or immersed applications overlapping each turn by 55% gives a double thickness.

COVERING: PREMPASTE™, PREMIER™ MOULDING COMPOUND, PREMIER™ LD MASTIC, PREMTAPE™, STEELCOAT™ COLOURTAPE, PREMIER™ PVC SELF-ADHESIVE TAPE, PREMCOTE™ TAPES

COUPLINGS, FLANGES ETC

Carefully bandage the fitting, pressing down folds and avoiding air gaps. Cover the whole fitting with at least two layers continuing onto the pipe coating either side.

At large changes of diameter, bolts and internal angles, make the profile more suitable for wrapping by applying PREMIER™ MOULDING COMPOUND as a fillet at angles and around bolts. Wrap the profiled joint ensuring the tape does not bridge gaps.

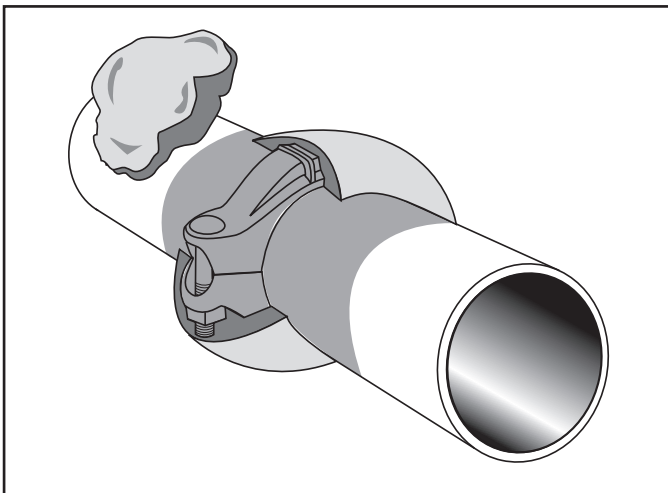


Fig 7. Profiling the joint with Premier Moulding Compound.

Fig 9. Wrap joint in two halves. Start on the crown and work towards pipe then repeat from crown working towards pipe on opposite side of joint.

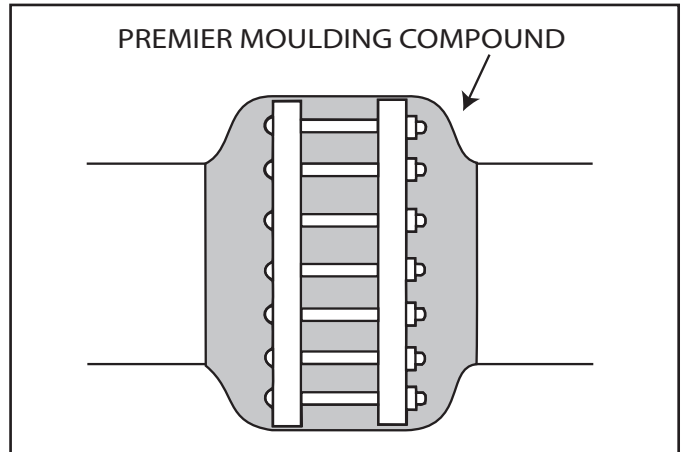
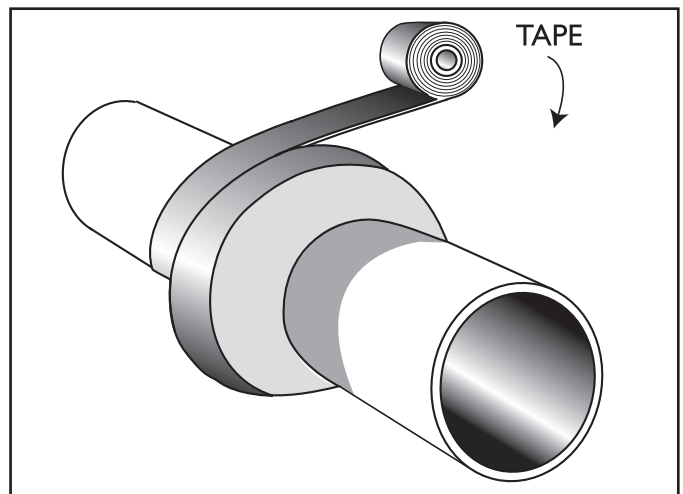


Fig 8. Make sure the moulding compound is pushed into all crevices and that it forms a smooth profile for wrapping.

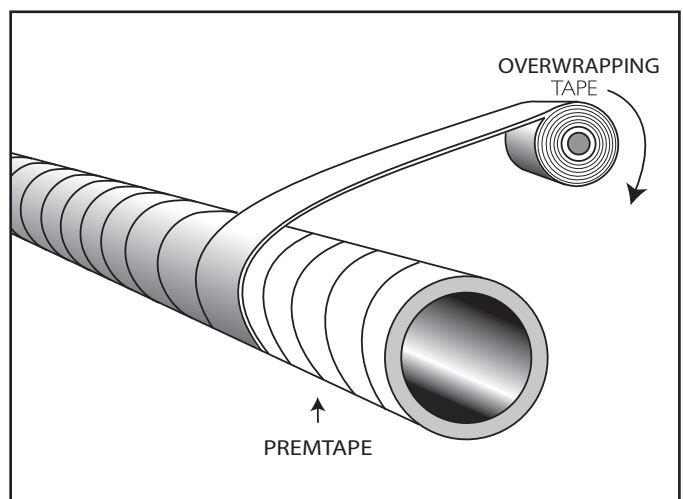


PROTECTIVE OUTERWRAP

For further protection, a separate overwrap of PREMIER PVC SELF-ADHESIVE TAPE™ or a PREMCOTE TAPE™, may be applied spirally over the petrolatum tape.

Consult our Technical Sales Department for advice on selection and application of overwraps.

Fig 10. Overwrap PREMTAPE with PREMIER PVC SELF-ADHESIVE TAPE or PREMCOTE TAPE with a 55% overlap.



COVERING: PREMPASTETM, PREMIERTM MOULDING COMPOUND, PREMIERTM LD MASTIC, PREMTAPESTM, STEELCOATTM COLOURTAPE, PREMIERTM PVC SELF-ADHESIVE TAPE, PREMCOTETM TAPES

INSTRUCTIONS FOR USE

STORAGE:

Store correct way up in original packaging. Store away from direct heat and open flames.

TRANSPORT:

No special precautions necessary.

HANDLING:

- Avoid contact of the compound with face, arms, etc.
- Wash thoroughly after use and before work breaks to remove compound from the skin.
- Careful attention should be given to personal hygiene.
- Change and clean soiled clothing

ACTION IN CASE OF...

FIRE: Extinguish with dry powder, carbon dioxide or chemical foam. Air breathing equipment may be necessary in large fires.

SKIN CONTACT: Wash with warm water and mild soap.

DISPOSAL:

Please minimise or avoid waste wherever possible. Please do not discard waste material, including packaging, in the surrounding environment. Follow all relevant legislation for disposal.

IMPORTANT: Premier Coatings Ltd pursue a policy to develop and continually improve all of our products and therefore information given in this data sheet is intended as a general guide and does not constitute a warranty or specification. However, our sales personnel are committed to assisting the user in establishing the suitability of the product for its intended purpose and additional specific information is available on request. These Instructions may not cover all circumstances and must be read in conjunction with the project specifications. For further advice contact Premier Coatings Ltd.